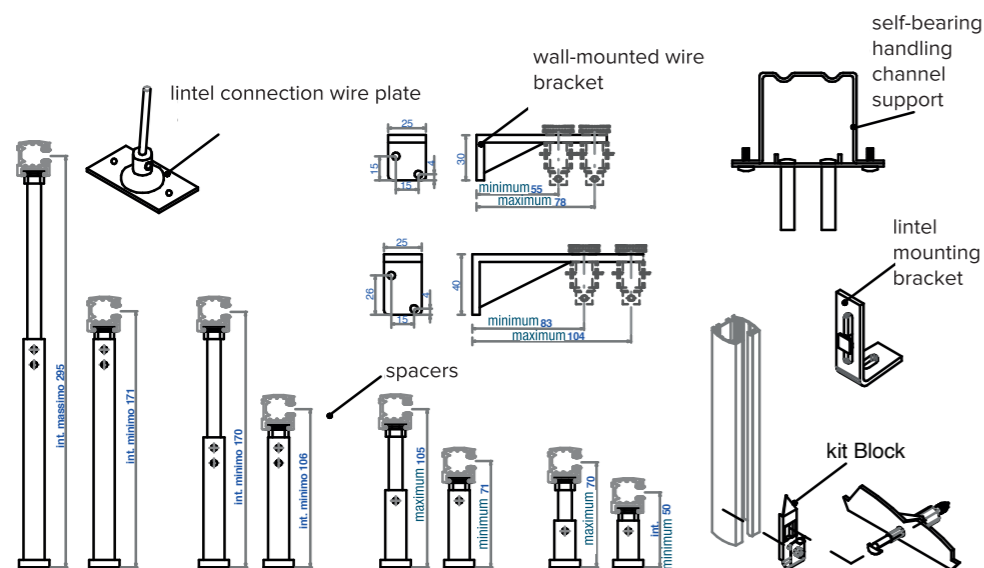
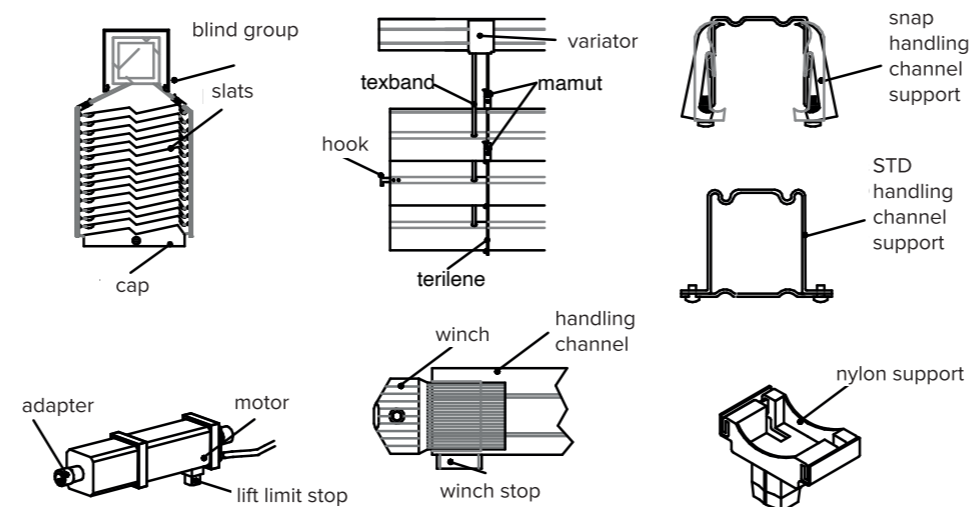


SPECIAL FIXING ACCESSORIES



DESCRIPTION OF BASIC FILO COMPONENTS



INSTRUCTION MANUAL FOR INSTALLING

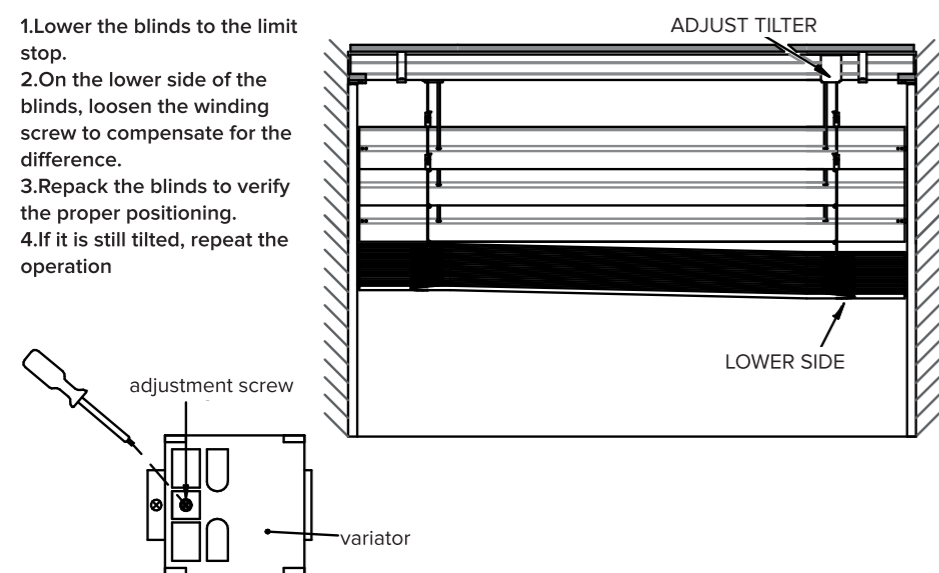
90-90S-81P-80-70-65-STD WIRE

CAREFULLY READ THE MANUAL BEFORE INSTALLING

Lupak Metal Venetian blind systems must be installed and powered only by authorised personnel.

TEXBAND ADJUSTMENT

1. Lower the blinds to the limit stop.
2. On the lower side of the blinds, loosen the winding screw to compensate for the difference.
3. Repack the blinds to verify the proper positioning.
4. If it is still tilted, repeat the operation



TROUBLESHOOTING TABLE

PROBLEM	POSSIBLE REASON	SOLUTION
The last slat does not close completely	Misaligned guides the blinds are narrow in width [bk]	Check guide tolerances (INSTALLATION TOLERANCES)
The blinds tilt moving upward	Tilter screw out of position	Adjust winding screw
The extended blind is tilted	Tilted ceiling / Terilene not properly adjusted	Check HT and space / adjust Terilene height
The motor runs only in one direction	Connection error / incorrect limit stop adjustment	Check connection on provided schematics correctly adjust the limit stop (see motor instructions)
The motor stops suddenly	Motor heat protection tripped	Wait 10 minutes.
The blinds come down in jerks	Installation out of tolerance, guide rubber profile damaged	Check BK tolerance restore the rubber profile
The blinds are very noisy	The box screws are loose	Tighten the screws

IN THE EVENT OF OTHER ISSUES, DO NOT USE THE VENETIAN BLINDS AND CONTACT CUSTOMER SERVICE.



LA LUCE A MODO TUO



Assembly cover panels Cord



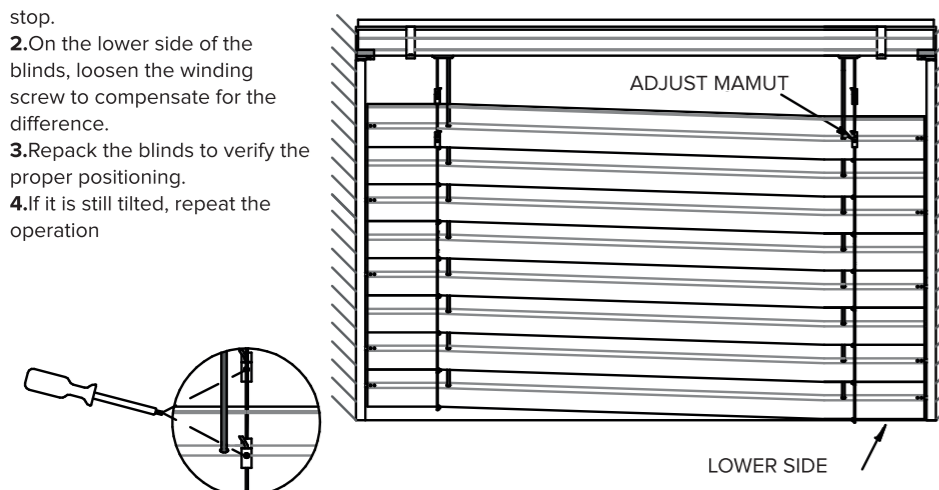
Assembly Cord system

Lupak Metal srl
48018 Faenza RA Italy
via Granarolo, 77
T +39 0546 646140
lupakmetal.com

REV
04 / 2023

TERILENE ADJUSTMENT

1. Lower the blinds to the limit stop.
2. On the lower side of the blinds, loosen the winding screw to compensate for the difference.
3. Repack the blinds to verify the proper positioning.
4. If it is still tilted, repeat the operation



INSTRUCTIONS FOR INSTALLERS

BEFORE INSTALLATION, ENSURE THAT THERE IS NO POWER AND THAT ALL ELECTRICAL CONNECTIONS ARE CREATED BY QUALIFIED TECHNICIANS.

INSTALLATION INFORMATION:

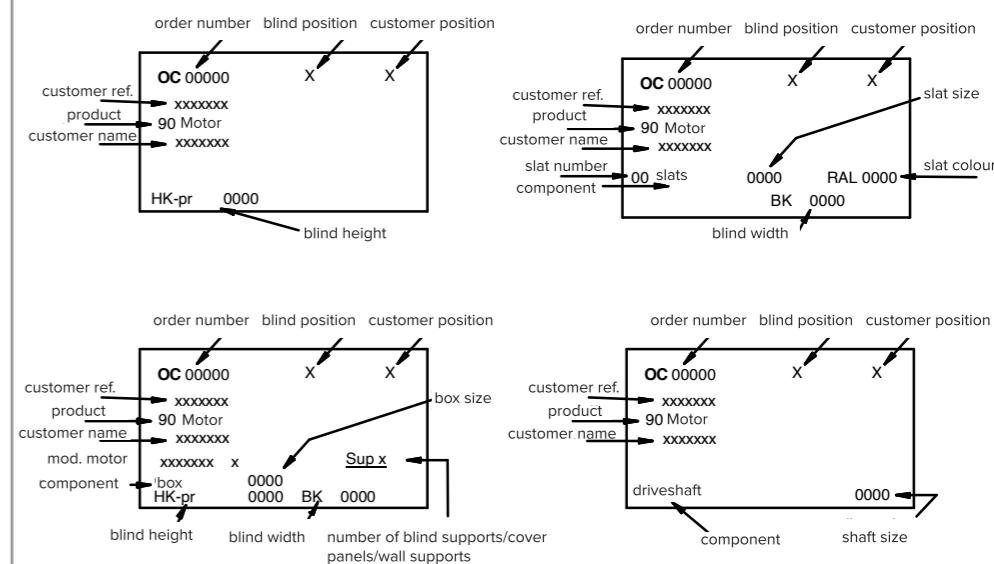
- Ensure that the guides are aligned both vertically and horizontally.
- Remove any dust and dirt from the Venetian blinds before using them.
- Mark the installation position box.
- Ensure that all scaffolding and auxiliary devices are safe to use.
- Fix the guides to materials with high dimensional stability.
- Work using only suitable and undamaged tools.
- Keep all packaging material and small parts out of reach of children:

DANGER OF SUFFOCATION!

WARRANTY CONDITIONS:

Failure to follow the instructions provided by LUPAK METAL in the enclosed manual shall result in the warranty being rendered null and void. LUPAK METAL declines all responsibility for any direct or indirect damage or injury caused by the failure to follow the instructions or by replacing any supplied parts with unauthorised materials. The warranty conditions shall be understood to be tacitly accepted upon receipt of the invoice. Application of the warranty shall be determined at the discretion of LUPAK METAL authorised technicians.

DESCRIPTION OF LABELS



CAUTION
Failure to follow the instructions may put the user in danger

CAUTION
Failure to follow the instructions may lead to damage to the product

CAUTION
electrical danger

USEFUL INFORMATION

ABBREVIATIONS AND SYMBOLS KEY

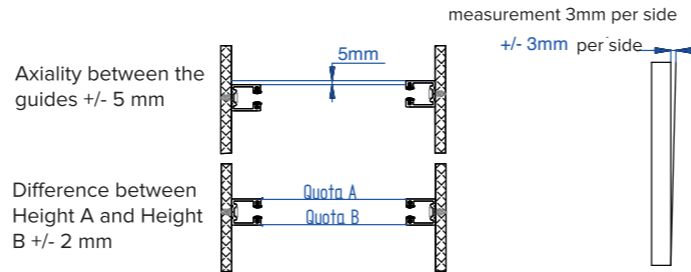
TL = slat length
BL = clearance width
BK = guide external width
HK = blind height
HT = total opening height
HL = clearance height
HS = total recess height

HT = HL + HS

BEFORE INSTALLATION

- separate the material (based on how and where it will be installed).
- select the required tools.
- check the clearance dimensions of the blind and opening observing the tolerances.
- remove the protective film, cutting it from the part of the maneuvering channel.
- **IF THERE IS A COVER PANEL, FIRST FOLLOW THE SECTION COVER PANEL FIXING.**

INSTALLATION TOLERANCES:

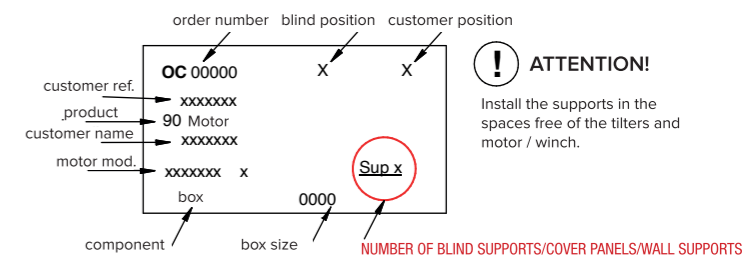


1 FIXING HEIGHTS

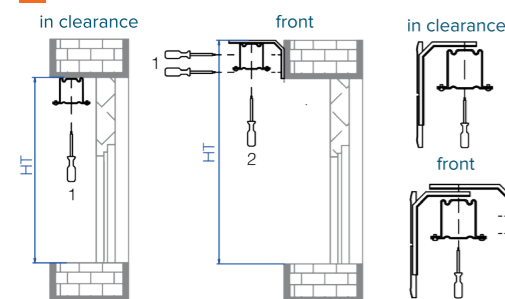
Models	MIN. P.
90 winch motor	130
80 winch motor	120
70 winch motor	110
65 winch motor	105
90 direct winch	150
80 direct winch	140
70 direct winch	130
65 direct winch	125

2 AMOUNT OF SUPPORTS

The number of supports is noted on the label located in the handling channel.



3 FIXING SNAP SUPPORTS



ATTENTION!
For assembly with cover panel, assemble the handling channel with the cover panel support. Fix the support, taking into account the fixing heights [1]

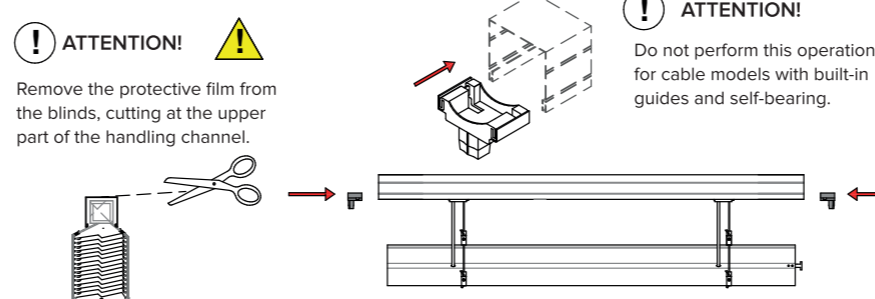
THE COVER PANELS MUST BE FIXED BEFORE THE BLINDS

FIXING MATERIAL

For fixing supports on the wall, use; Anchor d=8mm with screw Cap head 5x60

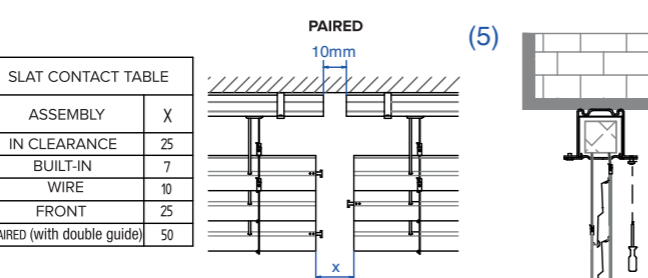
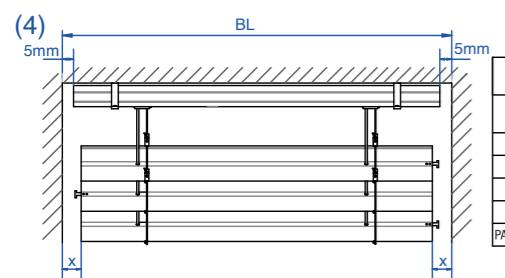
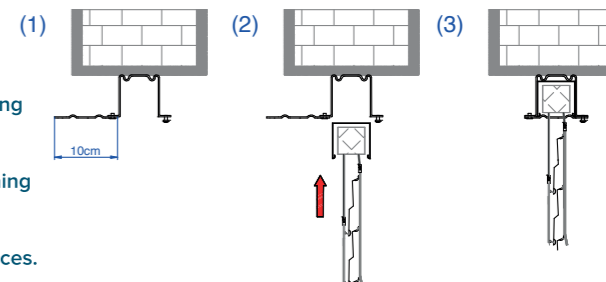
To fix the guides use; Anchor d=6mm with screw Countersunk 3.5x40

4 INSERTING NYLON SUPPORTS

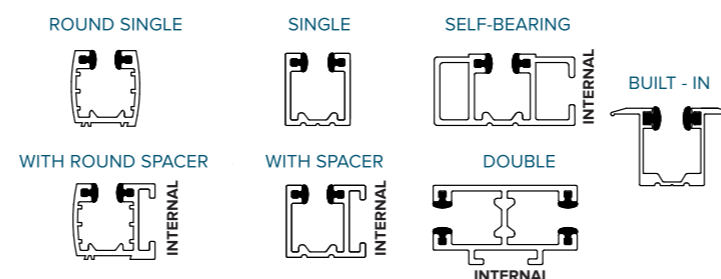


5 FIXING BLINDS

- 1 Open the maneuvering channel supports.
- 2 Grab the blinds from the maneuvering channel and insert them in the supports.
- 3 Close the supports without tightening the screws.
- 4 Centre the blinds in the opening, making sure to respect the tolerances.
- 5 Tighten the support screws.

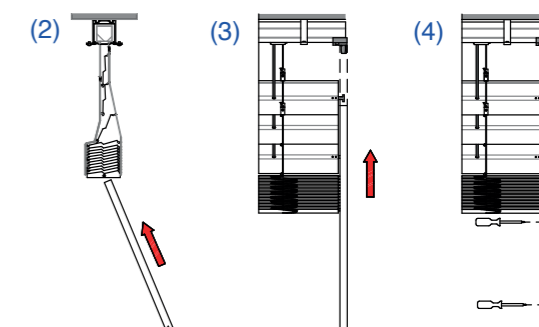


6 GUIDE TYPES



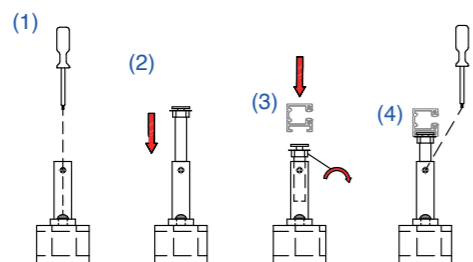
7a FIXING GUIDES IN CLEARANCE

- 1 Open the maneuvering channel supports.
- 2 Grab the blinds from the maneuvering channel and insert them in the supports.
- 3 Close the supports without tightening the screws
- 4 Centre the blinds in the opening, making sure to respect the tolerances.
- 5 Tighten the support screws.

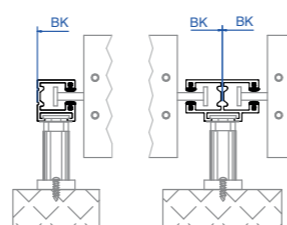


7b FRONT FIXING

- 1 Fix the spacer base centring it with the blinds.
- 2 Insert the telescopic pin in the base.
- 3 Insert the guide in the telescopic pin and fix it.
- 4 Adjust the guide spacing and tighten the grub screws located on the base.

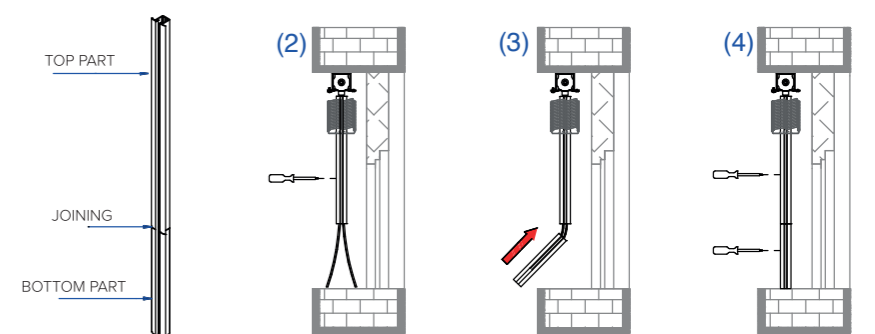


SPACER NUMBER TABLE	
UP TO HKmm	No. SPACERS
1600	2
2300	3
3000	4
3700	5
4400	6
5500	7



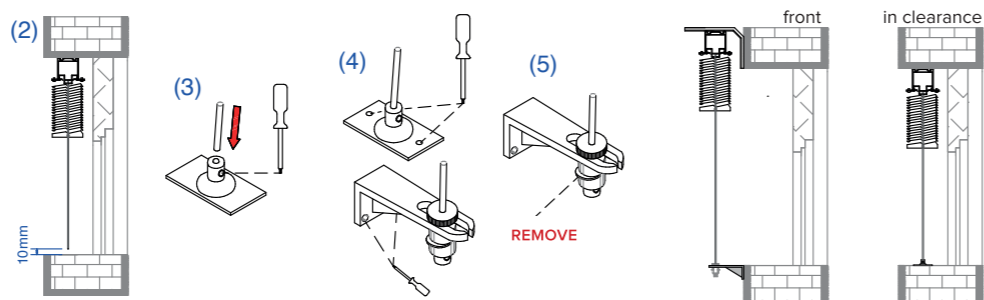
7c FIXING WITH RECESSED GUIDES

- 1 Remove the guides from the packaging without scratching them.
- 2 Being careful of the top, insert the guide (top), making sure all the hooks are inside, and fix it without tightening the screws.
- 3 Insert the gaskets in the guide piece (top) and insert it in line with the top.
- 4 Fix the guide, making sure not to damage the noise reduction gaskets.

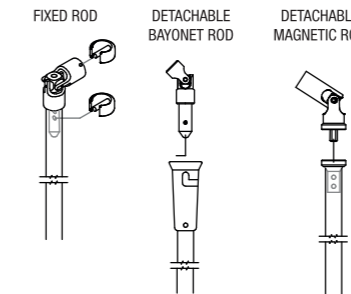
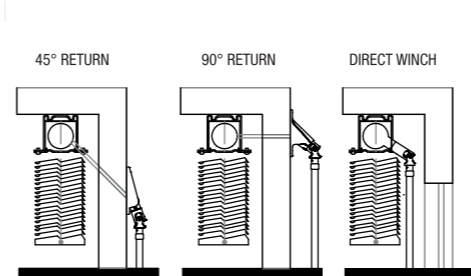


7d FIXING WITH GUIDE WIRE

- 1 Extend the guide wires.
- 2 When the desired length has been reached, cut the cable about 10 mm shorter.
- 3 Insert the wire in the clamp and fix it.
- 4 Fix the wire plate to the floor/wall.
- 5 For the wall version, remove the tensioning stop.



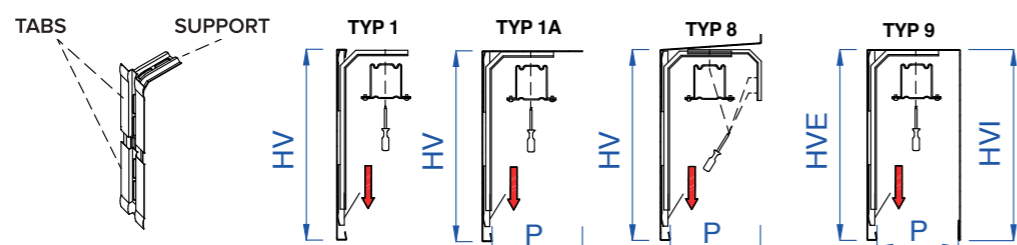
8 WINCH CONTROL



To change the angle of the winch, simply loosen the two winch screws.

9 COVER PANEL FIXING

- 1 Assemble the cover panel support with the tabs, taking HS into account.
- 2 If present, fix the cover panel caps with the supplied rivets.
- 3 Fix the cover panel with the cover panel support and the box support.
- 4 Lower the support tab and fix it.



THE AMOUNT OF SUPPORTS IS ON THE MANEUVRING CHANNEL LABEL

10 MOTOR CONTROL

ATTENTION!
ONLY THE UPWARD LIMIT STOP MAY BE CHANGED:
SOMFY motor: upwards limit stop BLACK key.
ELERO motor: upwards limit stop ORANGE key.



MAKE SURE THE MOTOR WIRES ARE ATTACHED TO THE BOX AND THAT THEY ARE NOT DAMAGED

SOMFY LIMIT STOP SETTINGS

- 1 Set the blinds at half height.
- 2 Press the black limit stop button on the motor.
- 3 Bring the blinds to the desired position.
- 4 Lower the blinds for 6 seconds.

ELERO LIMIT STOP SETTINGS

- 1 Set the blinds at half height.
- 2 Press the orange limit stop button on the motor for 3 seconds while raising the blinds.
- 3 Bring the blinds to the desired position.
- 5 Lower the blinds for 3 seconds.

ATTENTION!

In the event of a blind malfunction, consult the troubleshooting table.

TROUBLESHOOTING TABLE

11 TESTING

When installation is completed, the blinds must first be drawn up until they reach the limit stop. Then, lower the blinds until they reach the bottom limit stop.